

$\psi(4230)$

$$J^G(J^{PC}) = 0^-(1^{--})$$

also known as $Y(4230)$; was $X(4230)$

The recent measurement of $e^+e^- \rightarrow J/\psi\pi\pi$ (ABLIKIM 17B) led to a downward shift in the mass of the $\psi(4260)$, also known as $Y(4260)$, such that a distinction between the $\psi(4260)$ and $\psi(4230)$ no longer appears justified. Therefore, starting from this edition, we include the data of ABLIKIM 17B in this node and have listed the $\psi(4230)$ in the summary tables instead of the $\psi(4260)$.

 $\psi(4230)$ MASS

VALUE (MeV)	EVTS	DOCUMENT ID	TECN	COMMENT
4220 ± 15				OUR ESTIMATE
4219.1 ± 1.7				OUR AVERAGE Error includes scale factor of 1.1.
4216.7 ± 8.9 ± 4.1		¹ ABLIKIM	20AG BES3	$e^+e^- \rightarrow \mu^+\mu^-$
4220.4 ± 2.4 ± 2.3		² ABLIKIM	20N BES3	$e^+e^- \rightarrow \pi^0\pi^0 J/\psi$
4218.6 ± 3.8 ± 2.5		² ABLIKIM	20O BES3	$e^+e^- \rightarrow \eta J/\psi$
4218.5 ± 1.6 ± 4.0		³ ABLIKIM	19AI BES3	$e^+e^- \rightarrow \omega\chi_{c0}$
4228.6 ± 4.1 ± 6.3		ABLIKIM	19R BES3	$e^+e^- \rightarrow \pi^+D^0D^{*-} +$ c.c.
4200.6 ⁺ _{-13.3} ± 7.9 ± 3.0		⁴ ABLIKIM	19V BES3	$e^+e^- \rightarrow \gamma\chi_{c1}(3872)$
4222.0 ± 3.1 ± 1.4		⁵ ABLIKIM	17B BES3	$e^+e^- \rightarrow \pi^+\pi^- J/\psi$
4218 ⁺ _{-4.5} ± 5.5 ± 0.9		ABLIKIM	17G BES3	$e^+e^- \rightarrow \pi^+\pi^- h_c$
4209.5 ± 7.4 ± 1.4		⁶ ABLIKIM	17V BES3	$e^+e^- \rightarrow \pi^+\pi^- \psi(2S)$
• • •				We do not use the following data for averages, fits, limits, etc. • • •
4231.9 ± 5.3 ± 4.9		ABLIKIM	20N BES3	$e^+e^- \rightarrow \pi^0 Z_c(3900)^0,$ $Z_c^0 \rightarrow \pi^0 J/\psi$
4230 ± 8 ± 6	180	⁷ ABLIKIM	15C BES3	$e^+e^- \rightarrow \omega\chi_{c0}$

¹ Solution 1 of 8 with equal fit quality to the $e^+e^- \rightarrow \mu^+\mu^-$ cross section between 3.8 and 4.6 GeV to the coherent sum of four resonant amplitudes. Other solutions range from $4212.8 \pm 7.2 \pm 4.0$ to $4219.4 \pm 11.2 \pm 4.1$ MeV.

² From a fit of the measured cross section in the range $\sqrt{s} = 3.808\text{--}4.600$ GeV.

³ From a fit of the measured cross section from $\sqrt{s} = 4.178\text{--}4.278$ GeV. Supersedes ABLIKIM 15C.

⁴ Simultaneous fit to $\chi_{c1} \rightarrow \omega J/\psi$ and $\chi_{c1} \rightarrow \pi^+\pi^- J/\psi$.

⁵ From a three-resonance fit.

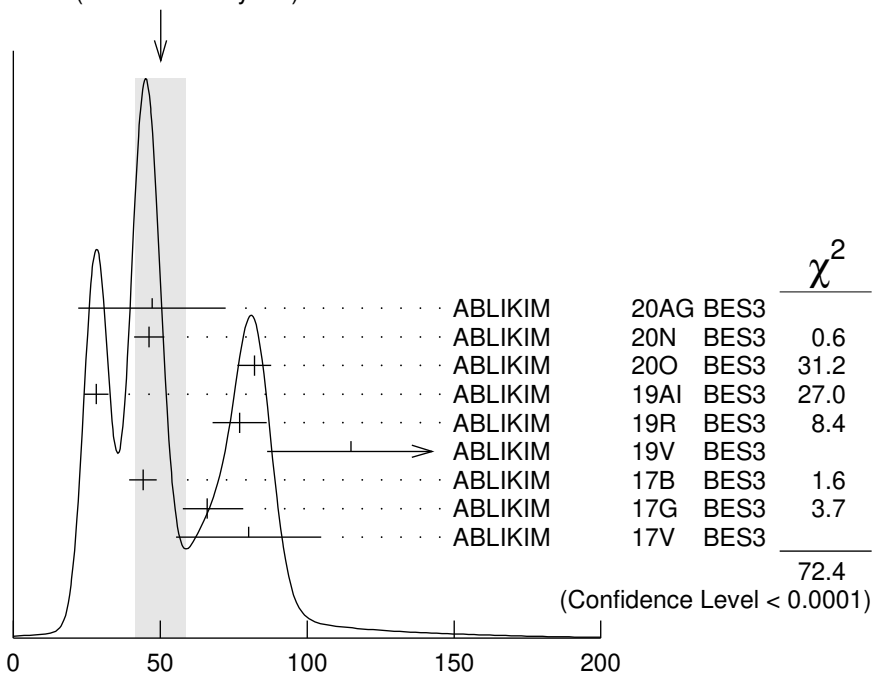
⁶ From a fit to the cross section for $e^+e^- \rightarrow \pi^+\pi^- \psi(2S) \rightarrow 2(\pi^+\pi^-)\ell^+\ell^-$ obtained from 16 center-of-mass energies between 4.008 and 4.600 GeV and comprising 5.1 fb^{-1} .

⁷ From a 3-parameter fit of measured cross sections from $\sqrt{s} = 4.21\text{--}4.42$ GeV to a phase-space modified Breit-Wigner function, using the decays $\chi_{c0} \rightarrow \pi^+\pi^-$, $\chi_{c0} \rightarrow K^+K^-$, and $\omega \rightarrow \pi^+\pi^-\pi^0$.

$\psi(4230)$ WIDTH

VALUE (MeV)	EVTS	DOCUMENT ID	TECN	COMMENT
20 to 100 OUR ESTIMATE				
50 ± 9 OUR AVERAGE Error includes scale factor of 3.8. See the ideogram below.				
47.2 ± 22.8 ± 10.5		¹ ABLIKIM	20AG BES3	$e^+e^- \rightarrow \mu^+\mu^-$
46.2 ± 4.7 ± 2.1		² ABLIKIM	20N BES3	$e^+e^- \rightarrow \pi^0\pi^0 J/\psi$
82.0 ± 5.7 ± 0.4		² ABLIKIM	20O BES3	$e^+e^- \rightarrow \eta J/\psi$
28.2 ± 3.9 ± 1.6		³ ABLIKIM	19AI BES3	$e^+e^- \rightarrow \omega\chi_{c0}$
77.0 ± 6.8 ± 6.3		ABLIKIM	19R BES3	$e^+e^- \rightarrow \pi^+D^0 D^{*-} + c.c.$
115 ⁺³⁸ / ₋₂₆ ± 12		⁴ ABLIKIM	19V BES3	$e^+e^- \rightarrow \gamma\chi_{c1}(3872)$
44.1 ± 4.3 ± 2.0		⁵ ABLIKIM	17B BES3	$e^+e^- \rightarrow \pi^+\pi^- J/\psi$
66.0 ^{+12.3} / _{-8.3} ± 0.4		ABLIKIM	17G BES3	$e^+e^- \rightarrow \pi^+\pi^- h_c$
80.1 ± 24.6 ± 2.9		⁶ ABLIKIM	17V BES3	$e^+e^- \rightarrow \pi^+\pi^- \psi(2S)$
● ● ● We do not use the following data for averages, fits, limits, etc. ● ● ●				
41.2 ± 16.0 ± 16.4		ABLIKIM	20N BES3	$e^+e^- \rightarrow \pi^0 Z_c(3900)^0$, $Z_c^0 \rightarrow \pi^0 J/\psi$
38 ± 12 ± 2	180	⁷ ABLIKIM	15C BES3	$e^+e^- \rightarrow \omega\chi_{c0}$

WEIGHTED AVERAGE
50 ± 9 (Error scaled by 3.8)



$\psi(4230)$ WIDTH (MeV)

¹ Solution 1 of 8 with equal fit quality to the $e^+e^- \rightarrow \mu^+\mu^-$ cross section between 3.8 and 4.6 GeV to the coherent sum of four resonant amplitudes. Other solutions range from $36.4 \pm 16.8 \pm 8.1$ to $49.6 \pm 22.6 \pm 11.0$ MeV.
² From a fit of the measured cross section in the range $\sqrt{s} = 3.808\text{--}4.600$ GeV.
³ From a fit of the measured cross section from $\sqrt{s} = 4.178\text{--}4.278$ GeV. Supersedes ABLIKIM 15C.

⁴ Simultaneous fit to $\chi_{c1} \rightarrow \omega J/\psi$ and $\chi_{c1} \rightarrow \pi^+ \pi^- J/\psi$.

⁵ From a three-resonance fit.

⁶ From a fit to the cross section for $e^+ e^- \rightarrow \pi^+ \pi^- \psi(2S) \rightarrow 2(\pi^+ \pi^-) \ell^+ \ell^-$ obtained from 16 center-of-mass energies between 4.008 and 4.600 GeV and comprising 5.1 fb^{-1} .

⁷ From a 3-parameter fit of measured cross sections from $\sqrt{s} = 4.21\text{--}4.42 \text{ GeV}$ to a phase-space modified Breit-Wigner function, using the decays $\chi_{c0} \rightarrow \pi^+ \pi^-$, $\chi_{c0} \rightarrow K^+ K^-$, and $\omega \rightarrow \pi^+ \pi^- \pi^0$.

$\psi(4230)$ DECAY MODES

Mode	Fraction (Γ_i/Γ)
Γ_1 $e^+ e^-$	
Γ_2 $\mu^+ \mu^-$	
Γ_3 $\omega \chi_{c0}$	seen
Γ_4 $\pi^+ \pi^- h_c$	seen
Γ_5 $\pi^0 \pi^0 J/\psi$	seen
Γ_6 $\pi^+ \pi^- J/\psi$	seen
Γ_7 $\eta J/\psi$	seen
Γ_8 $\pi^+ \pi^- \psi(2S)$	seen
Γ_9 $\pi^+ D^0 D^{*-} + \text{c.c.}$	seen
Γ_{10} $\Xi^- \Xi^+$	
Γ_{11} $\gamma \chi_{c1}(3872)$	seen
Γ_{12} $\pi^+ \pi^- \pi^0 \eta_c$	seen
Γ_{13} $\pi^+ \pi^- \eta_c$	not seen
Γ_{14} $\gamma \pi^0 \eta_c$	not seen
Γ_{15} $\rho \bar{\rho} \rho \bar{\rho}$	not seen

$\psi(4230)$ PARTIAL WIDTHS

$\Gamma(\mu^+ \mu^-)$				Γ_2
VALUE (keV)	DOCUMENT ID	TECN	COMMENT	
$1.53 \pm 1.26 \pm 0.54$	^{1,2} ABLIKIM	20AG BES3	$e^+ e^- \rightarrow \mu^+ \mu^-$	
¹ From a fit to the $e^+ e^- \rightarrow \mu^+ \mu^-$ cross section between 3.8 and 4.6 GeV to the coherent sum of four resonant amplitudes assuming $\Gamma(\mu^+ \mu^-) = \Gamma(e^+ e^-)$. ² From solution 1 of 8 with equal fit quality. Other solutions range from $1.09 \pm 0.84 \pm 0.39$ to $1.53 \pm 1.26 \pm 0.54 \text{ keV}$.				

$\psi(4230) \Gamma(i)\Gamma(e^+ e^-)/\Gamma(\text{total})$

$\Gamma(\omega \chi_{c0}) \times \Gamma(e^+ e^-)/\Gamma_{\text{total}}$				$\Gamma_3 \Gamma_1/\Gamma$
VALUE (eV)	EVTS	DOCUMENT ID	TECN	COMMENT
$2.5 \pm 0.2 \pm 0.3$		¹ ABLIKIM	19AI BES3	$e^+ e^- \rightarrow \omega \chi_{c0}$
• • • We do not use the following data for averages, fits, limits, etc. • • •				
$2.7 \pm 0.5 \pm 0.4$	180	² ABLIKIM	15C BES3	$e^+ e^- \rightarrow \omega \chi_{c0}$
¹ From a fit of the measured cross section from $\sqrt{s} = 4.178\text{--}4.278 \text{ GeV}$. Supersedes ABLIKIM 15C.				

²From a 3-parameter fit of measured cross sections from $\sqrt{s} = 4.21\text{--}4.42$ GeV to a phase-space modified Breit-Wigner function, using the decays $\chi_{c0} \rightarrow \pi^+\pi^-$, $\chi_{c0} \rightarrow K^+K^-$, and $\omega \rightarrow \pi^+\pi^-\pi^0$.

$\Gamma(\eta J/\psi) \times \Gamma(e^+e^-)/\Gamma_{\text{total}}$ $\Gamma_7\Gamma_1/\Gamma$

VALUE (eV)	DOCUMENT ID	TECN	COMMENT
------------	-------------	------	---------

• • • We do not use the following data for averages, fits, limits, etc. • • •

8.0 ± 1.7	¹ ABLIKIM	200	BES3 $e^+e^- \rightarrow \eta J/\psi$
4.8 ± 1.0	² ABLIKIM	200	BES3 $e^+e^- \rightarrow \eta J/\psi$
7.0 ± 1.5	³ ABLIKIM	200	BES3 $e^+e^- \rightarrow \eta J/\psi$

¹Solution 1 of three equivalent fit solutions using three resonant structures.

²Solution 2 of three equivalent fit solutions using three resonant structures.

³Solution 3 of three equivalent fit solutions using three resonant structures.

$\Gamma(\pi^+\pi^-\psi(2S)) \times \Gamma(e^+e^-)/\Gamma_{\text{total}}$ $\Gamma_8\Gamma_1/\Gamma$

VALUE (eV)	DOCUMENT ID	TECN	COMMENT
------------	-------------	------	---------

• • • We do not use the following data for averages, fits, limits, etc. • • •

1.6 ± 1.3	¹ ABLIKIM	19K	BES3 $e^+e^- \rightarrow \pi^+\pi^-\psi(2S)$
1.8 ± 1.4	² ABLIKIM	19K	BES3 $e^+e^- \rightarrow \pi^+\pi^-\psi(2S)$

¹Solution I of two equivalent solutions in a fit using two interfering resonances.

²Solution II of two equivalent solutions in a fit using two interfering resonances.

$\Gamma(\Xi^-\Xi^+) \times \Gamma(e^+e^-)/\Gamma_{\text{total}}$ $\Gamma_{10}\Gamma_1/\Gamma$

VALUE (eV)	CL%	DOCUMENT ID	TECN	COMMENT
------------	-----	-------------	------	---------

$< 3.3 \times 10^{-4}$	90	ABLIKIM	20C	BES3 $e^+e^- \rightarrow \Xi^-\Xi^+$
------------------------	----	---------	-----	--------------------------------------

$\psi(4230)$ BRANCHING RATIOS

$\Gamma(\omega\chi_{c0})/\Gamma_{\text{total}}$ Γ_3/Γ

VALUE	EVTS	DOCUMENT ID	TECN	COMMENT
-------	------	-------------	------	---------

seen	180	¹ ABLIKIM	15C	BES3 $e^+e^- \rightarrow \omega\chi_{c0}$
------	-----	----------------------	-----	---

¹From a 3-parameter fit of measured cross sections from $\sqrt{s} = 4.21\text{--}4.42$ GeV to a phase-space modified Breit-Wigner function, using the decays $\chi_{c0} \rightarrow \pi^+\pi^-$, $\chi_{c0} \rightarrow K^+K^-$, and $\omega \rightarrow \pi^+\pi^-\pi^0$.

$\Gamma(\pi^+\pi^-h_c)/\Gamma_{\text{total}}$ Γ_4/Γ

VALUE	DOCUMENT ID	TECN	COMMENT
-------	-------------	------	---------

seen	ABLIKIM	17G	BES3 $e^+e^- \rightarrow \pi^+\pi^-h_c$
------	---------	-----	---

$\Gamma(\pi^0\pi^0 J/\psi)/\Gamma_{\text{total}}$ Γ_5/Γ

VALUE	DOCUMENT ID	TECN	COMMENT
-------	-------------	------	---------

seen	¹ ABLIKIM	20N	BES3 $e^+e^- \rightarrow \pi^0\pi^0 J/\psi$
------	----------------------	-----	---

¹From a fit to the cross section $e^+e^- \rightarrow \pi^0\pi^0 J/\psi$ at center-of-mass energies between 3.808 and 4.600 GeV.

$\Gamma(\pi^+\pi^- J/\psi)/\Gamma_{\text{total}}$ Γ_6/Γ

VALUE	DOCUMENT ID	TECN	COMMENT
-------	-------------	------	---------

seen	ABLIKIM	17B	BES3 $e^+e^- \rightarrow \pi^+\pi^- J/\psi$
------	---------	-----	---

$\Gamma(\eta J/\psi)/\Gamma_{\text{total}}$				Γ_7/Γ
VALUE	DOCUMENT ID	TECN	COMMENT	
seen	ABLIKIM	200	BES3	$e^+e^- \rightarrow \eta J/\psi$

$\Gamma(\pi^+\pi^-\psi(2S))/\Gamma_{\text{total}}$				Γ_8/Γ
VALUE	DOCUMENT ID	TECN	COMMENT	
seen	¹ ABLIKIM	17V	BES3	$e^+e^- \rightarrow \pi^+\pi^-\psi(2S)$

¹ From a fit to the cross section for $e^+e^- \rightarrow \pi^+\pi^-\psi(2S) \rightarrow 2(\pi^+\pi^-)\ell^+\ell^-$ obtained from 16 center-of-mass energies between 4.008 and 4.600 GeV and comprising 5.1 fb^{-1} .

$\Gamma(\pi^+D^0D^{*-} + \text{c.c.})/\Gamma_{\text{total}}$				Γ_9/Γ
VALUE	DOCUMENT ID	TECN	COMMENT	
seen	ABLIKIM	19R	BES3	$e^+e^- \rightarrow \pi^+D^0D^{*-} + \text{c.c.}$

$\Gamma(\gamma\chi_{c1}(3872))/\Gamma_{\text{total}}$				Γ_{11}/Γ
VALUE	DOCUMENT ID	TECN	COMMENT	
seen	ABLIKIM	19V	BES3	$e^+e^- \rightarrow \gamma\chi_{c1}(3872)$

$\Gamma(\pi^+\pi^-\pi^0\eta_c)/\Gamma_{\text{total}}$				Γ_{12}/Γ
VALUE	DOCUMENT ID	TECN	COMMENT	
seen	¹ ABLIKIM	21B	BES3	$e^+e^- \rightarrow \pi^+\pi^-\pi^0\eta_c$

¹ Seen as a peak in the $e^+e^- \rightarrow \pi^+\pi^-\pi^0\eta_c$ cross section with a peak value of $46.1^{+9.5}_{-9.4} \pm 6.6 \text{ pb}$ at $\sqrt{s} = 4.226 \text{ GeV}$.

$\Gamma(\pi^+\pi^-\eta_c)/\Gamma_{\text{total}}$				Γ_{13}/Γ
VALUE	DOCUMENT ID	TECN	COMMENT	
not seen	¹ ABLIKIM	21B	BES3	$e^+e^- \rightarrow \pi^+\pi^-\eta_c$

¹ Not seen in $e^+e^- \rightarrow \pi^+\pi^-\eta_c$ at $\sqrt{s} = 4.226 \text{ GeV}$ with a 90% C.L. upper limit on the cross section of 16.8 pb.

$\Gamma(\gamma\pi^0\eta_c)/\Gamma_{\text{total}}$				Γ_{14}/Γ
VALUE	DOCUMENT ID	TECN	COMMENT	
not seen	¹ ABLIKIM	21B	BES3	$e^+e^- \rightarrow \gamma\pi^0\eta_c$

¹ Not seen in $e^+e^- \rightarrow \gamma\pi^0\eta_c$ at $\sqrt{s} = 4.226 \text{ GeV}$ with a 90% C.L. upper limit on the cross section of 11.2 pb.

$\Gamma(p\bar{p}p\bar{p})/\Gamma_{\text{total}}$				Γ_{15}/Γ
VALUE	DOCUMENT ID	TECN	COMMENT	
not seen	ABLIKIM	21D	BES3	$4.0\text{--}4.6 e^+e^- \rightarrow p\bar{p}p\bar{p}$

$\psi(4230)$ REFERENCES

ABLIKIM	21B	PR D103 032006	M. Ablikim <i>et al.</i>	(BESIII Collab.)
ABLIKIM	21D	PR D103 052003	M. Ablikim <i>et al.</i>	(BESIII Collab.)
ABLIKIM	20AG	PR D102 112009	M. Ablikim <i>et al.</i>	(BESIII Collab.)
ABLIKIM	20C	PRL 124 032002	M. Ablikim <i>et al.</i>	(BESIII Collab.)
ABLIKIM	20N	PR D102 012009	M. Ablikim <i>et al.</i>	(BESIII Collab.)
ABLIKIM	20O	PR D102 031101	M. Ablikim <i>et al.</i>	(BESIII Collab.)
ABLIKIM	19AI	PR D99 091103	M. Ablikim <i>et al.</i>	(BESIII Collab.)

ABLIKIM	19K	PR D99 019903 (errata.)	M. Ablikim <i>et al.</i>	(BESIII Collab.)
ABLIKIM	19R	PRL 122 102002	M. Ablikim <i>et al.</i>	(BESIII Collab.)
ABLIKIM	19V	PRL 122 232002	M. Ablikim <i>et al.</i>	(BESIII Collab.)
ABLIKIM	17B	PRL 118 092001	M. Ablikim <i>et al.</i>	(BESIII Collab.)
ABLIKIM	17G	PRL 118 092002	M. Ablikim <i>et al.</i>	(BESIII Collab.)
ABLIKIM	17V	PR D96 032004	M. Ablikim <i>et al.</i>	(BESIII Collab.)
Also		PR D99 019903 (errata.)	M. Ablikim <i>et al.</i>	(BESIII Collab.)
ABLIKIM	15C	PRL 114 092003	M. Ablikim <i>et al.</i>	(BESIII Collab.)
